

IRVING

ON PARK

Cossitt

3 Bedroom/ 3.5 Bath
 Conditioned: 1,933 sf

Garage: 449 sf

Rooftop Deck: 435 sf

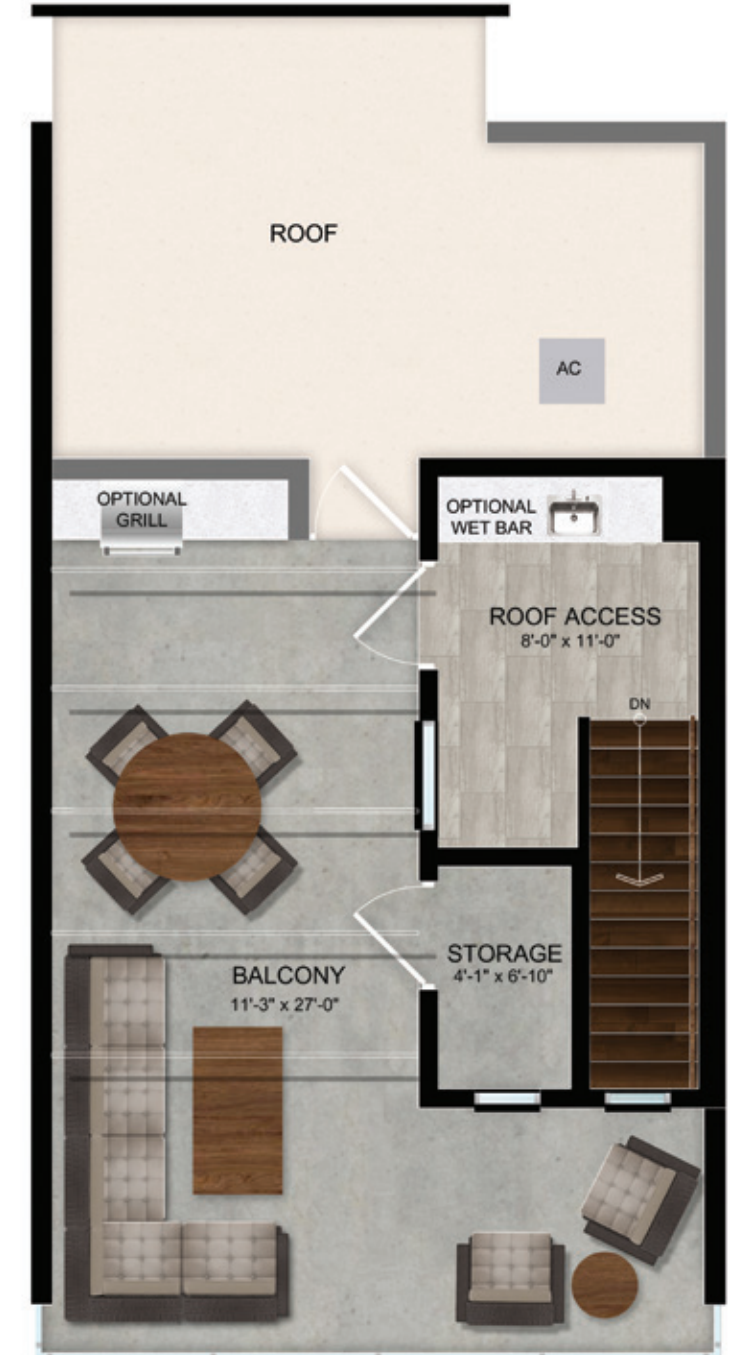


1st Floor

2nd Floor

3rd Floor

4th Floor



These drawings are conceptual only for the convenience of reference and subject to change without notice. Plans may be reversed. They should not be relied upon as representations, express, or implied, of the final detail of the residences. Units shown are examples of the unit types and may not depict actual units. Stated square footages and ranges for particular unit type and are measured to the exterior boundaries of the exterior walls and the centerline of interior demising and in fact vary from the area that would be determined by using the description and definition of the "Unit" set forth in the Declaration (which generally only includes the interior airspace between the perimeter walls and excludes interior structural components).